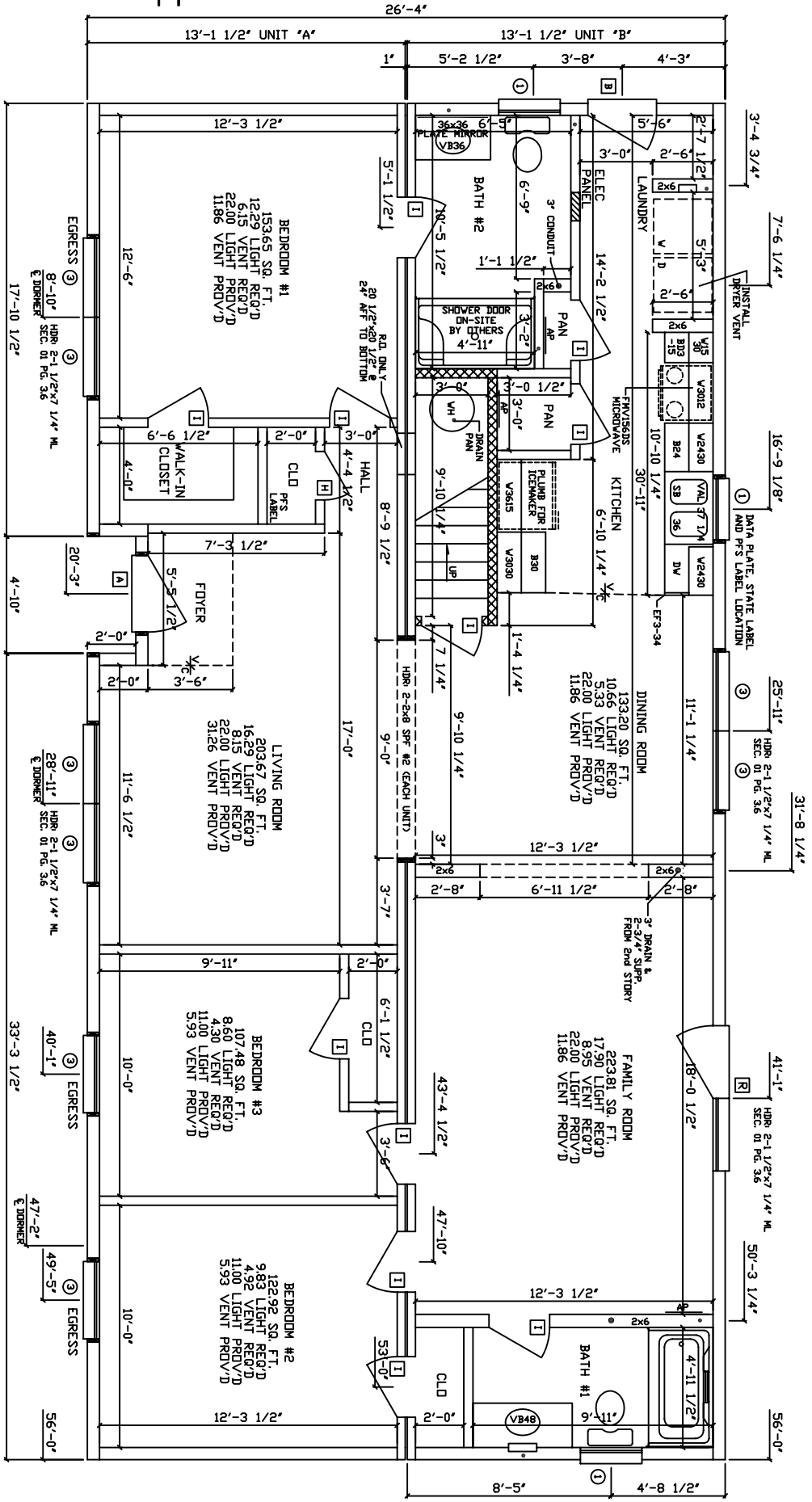


RESIDENTIAL CODE WITH VA AMENDMENTS  
 TIONAL ENERGY CONSERVATION CODE  
 ELECTRICAL CODE WITH VA AMENDMENTS

ALL EXT. LOAD BEARING HDR'S WITH SPAN OF 3'-4" OR LESS WILL BE (3) 2x6 SPF #2 ALL OTHERS WILL BE SPECIFIED. ALL REQUIRED JACK STUDS SHOWN ARE 2x6 SPF #2 (SECT. 01, PG. 3.4 )  
 ALL M/V HDR'S WITH SPAN OF 8'-1" OR LESS WILL BE (4) 2x6 SPF #2 ALL OTHERS WILL BE SPECIFIED. (SECT. 01, PG. 7.3 )

R-13 INSULATION INSTALLED IN UNFINISHED CAPE STAIR WALLS

SN-9825/QN-14392/VA



FR JOIST  
 A  
 DR  
 DM

SIDING=21 SQ  
 SHINGLES=26 SQ

RESPONSIBLE FOR PROVIDING A PROPERLY SIZED SYSTEM TO COVER A 48,000 BTU LOSS WAS CALCULATED WITH R-19 FLOOR INSULATION

4. M/V HDR @ LIVING/DINING ROOM TO BE 4-2x8 SPF #2 (SEC. 01 PG. 7.3)  
 5. EXT CLG BEAM @ FLOYER TO BE 2-1 1/2"x9 1/4" ML (SEC. 1, PG. 3.6)  
 6. 12/12 STORAGE RAFTER ROOF @ 24" O.C.  
 7.